

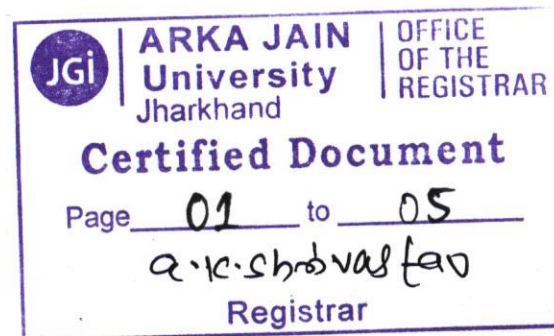
1.4.2

School wise feedback Analysis from Stakeholder

- 1) Student 2) Teachers 3) Employers 4) Alumni

Academic Year 2018-19

School of Engineering & IT

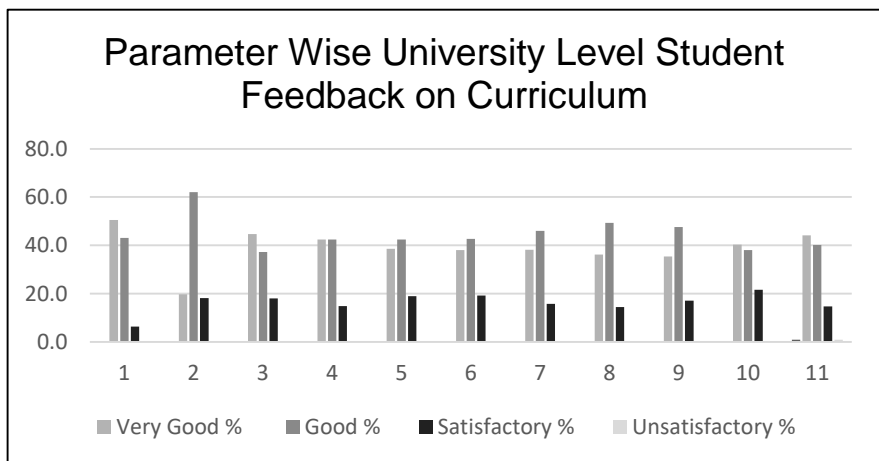


Student Feedback Analysis

The below chart is the consolidated Programme level analysis report from the 290 students of School of Engineering & IT for the year 2018-19

ARKA JAIN University, Jharkhand – 2018-19 – Programme Wise Parameter Wise Consolidated Students Feedback

School Name	BCA	MCA	B.TECH (CIVIL)	B.TECH (MECH)	B.TECH (EEE)	B.TECH (CSE)		BCA	MCA	B.TECH (CIVIL)	B.TECH (MECH)	B.TECH (EEE)	B.TECH (CSE)		BCA	MCA	B.TECH (CIVIL)	B.TECH (MECH)	B.TECH (EEE)	B.TECH (CSE)		BCA	MCA	B.TECH (CIVIL)	B.TECH (MECH)	B.TECH (EEE)	B.TECH (CSE)				
No. of Respondents	215	22	6	18	11	18		215	22	6	18	11	18		215	22	6	18	11	18		215	22	6	18	11	18				
Parameter for Feedback from	Very Good %						Very Good %	Good %						Good %	Satisfactory						Satisfactory %	Unsatisfactory %						Unsatisfactory %			
1	47.0	63.6	16.7	33.3	27.3	50.0	39.6	46.5	36.4	83.3	61.1	63.6	44.4	55.9	6.1	0.0	0.0	5.6	9.1	5.6	4.4	0.5	0.0	0.0	0.0	0.0	0.0	0.0	0.0	0.1	
2	33.5	4.6	0.0	27.8	0.0	16.7	13.7	52.1	59.1	16.7	50.0	27.3	61.1	44.4	14.4	36.4	83.3	22.2	72.7	22.2	41.9	0.0	0.0	0.0	0.0	0.0	0.0	0.0	0.0	0.0	
3	36.7	40.9	16.7	16.7	27.3	38.9	29.5	44.7	45.5	33.3	55.6	54.6	50.0	47.3	18.6	13.6	50.0	27.8	18.2	11.1	23.2	0.0	0.0	0.0	0.0	0.0	0.0	0.0	0.0	0.0	
4	40.0	27.3	50.0	38.9	18.2	61.1	39.2	47.4	45.5	16.7	50.0	36.4	16.7	35.4	12.6	27.3	33.3	11.1	45.5	22.2	25.3	0.0	0.0	0.0	0.0	0.0	0.0	0.0	0.0	0.0	
5	39.5	36.4	16.7	44.4	0.0	38.9	29.3	46.1	31.8	16.7	50.0	72.7	55.6	45.5	14.4	31.8	66.7	5.6	27.3	5.6	25.2	0.0	0.0	0.0	0.0	0.0	0.0	0.0	0.0	0.0	
6	35.4	36.4	33.3	27.8	27.3	50.0	35.0	45.6	40.9	33.3	55.6	45.5	44.4	44.2	19.1	22.7	33.3	16.7	27.3	5.6	20.8	0.0	0.0	0.0	0.0	0.0	0.0	0.0	0.0	0.0	
7	31.2	40.9	33.3	33.3	27.3	38.9	34.1	53.5	54.6	66.7	61.1	18.2	50.0	50.7	15.4	4.6	0.0	5.6	54.6	11.1	15.2	0.0	0.0	0.0	0.0	0.0	0.0	0.0	0.0	0.0	0.0
8	36.7	13.6	0.0	33.3	18.2	38.9	23.5	51.6	45.5	16.7	55.6	54.6	44.4	44.7	11.6	40.9	66.7	11.1	27.3	16.7	29.0	0.0	0.0	16.7	0.0	0.0	0.0	0.0	0.0	2.8	
9	34.0	18.2	0.0	16.7	18.2	27.8	19.1	47.4	59.1	50.0	77.8	72.7	61.1	61.4	18.6	22.7	50.0	5.6	9.1	11.1	19.5	0.0	0.0	0.0	0.0	0.0	0.0	0.0	0.0	0.0	
10	27.4	27.3	0.0	27.8	9.1	38.9	21.7	52.6	45.5	50.0	38.9	45.5	44.4	46.1	20.0	27.3	50.0	33.3	45.5	16.7	32.1	0.0	0.0	0.0	0.0	0.0	0.0	0.0	0.0	0.0	
11	41.9	36.4	33.3	44.4	45.5	55.6	42.8	41.4	50.0	50.0	33.3	18.2	22.2	35.9	16.7	13.6	16.7	22.2	36.4	22.2	21.3	0.0	0.0	0.0	0.0	0.0	0.0	0.0	0.0	0.0	
TOTAL	36.7	31.4	18.2	31.3	19.8	41.4	29.8	48.1	46.7	39.4	53.5	46.3	44.9	46.5	15.2	21.9	40.9	15.2	33.9	13.6	23.5	0.0	0.0	1.5	0.0	0.0	0.0	0.0	0.0	0.3	



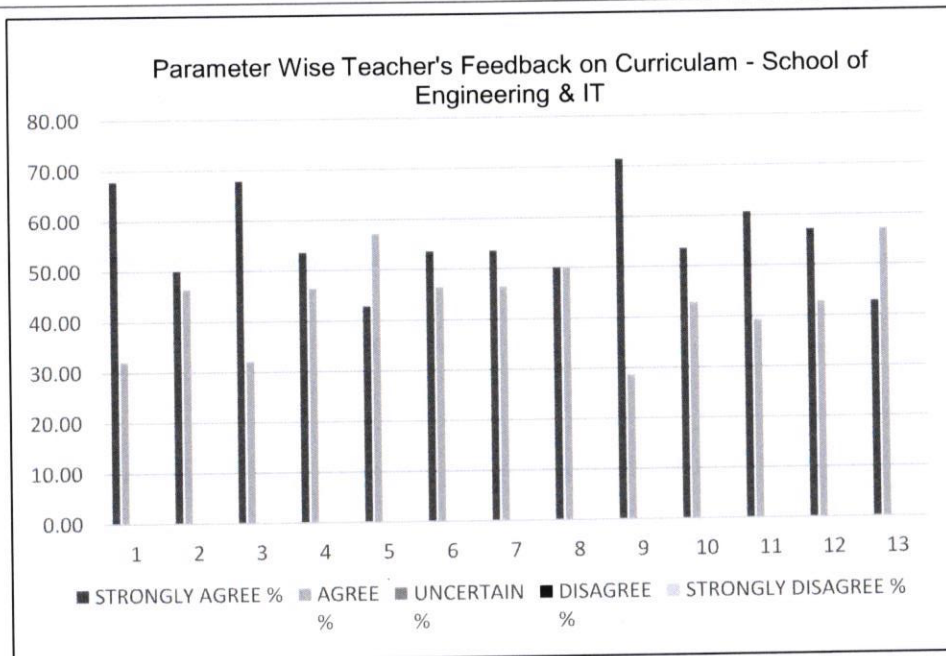
Parameters for Feedback from Students	
1	Course Content of the Syllabus
2	Relevance of the course in the overall structure of program.
3	Employment Orientation in the Curriculum.
4	Recommended Reading material was.
5	Class tests/mid-semester tests were conducted.
6	Opportunities for the students to participate in internship, field & Industry visit, Excursion, Outbound activities.
7	Opportunities for students to attend guest lectures, Seminars, Workshops, Value added programs, Conferences, Competitions.
8	Weekly Hours assigned for this course are sufficient to cover the course contents.
9	Difficulty level of the course
10	Current syllabi provide opportunity to enhance research orientation.
11	Planning of academic assignments and availability of resources to complete the same.

Teacher Feedback Analysis

The below chart is the consolidated School level analysis report from the 28 Teachers of School of Engineering & IT for the year 2018-19

ARKA JAIN University, Jharkhand – 2018-19 – Program Wise Parameter Wise Consolidated Teacher's Feedback

School Name	School of Engineering & IT				
No. of Respondents	28				
Parameter for Feedback from Faculty	STRONGLY AGREE %	AGREE %	UNCERTAIN %	DISAGREE %	STRONGLY DISAGREE %
1	67.86	32.14	0.00	0.00	0.00
2	50.00	46.43	0.00	0.00	0.00
3	67.86	32.14	0.00	0.00	0.00
4	53.57	46.43	0.00	0.00	0.00
5	42.86	57.14	0.00	0.00	0.00
6	53.57	46.43	0.00	0.00	0.00
7	53.57	46.43	0.00	0.00	0.00
8	50.00	50.00	0.00	0.00	0.00
9	71.43	28.57	0.00	0.00	0.00
10	53.57	42.86	0.00	0.00	0.00
11	60.71	39.29	0.00	0.00	0.00
12	57.14	42.86	0.00	0.00	0.00
13	42.86	57.14	0.00	0.00	0.00



Parameters for Feedback from Teachers	
1	The syllabi is appropriate to program/courses
2	Courses are significant in terms of knowledge, concepts, manual skill, analytical abilities, Academia Industry linkage and broadening perspectives.
3	Program contents satisfy the vision and mission of the university.
4	Credit allocation to each course is appropriate.
5	Well defined course objectives and course outcome to have significant learning outcomes.
6	Practical courses enable students to acquire analytical/ experimental skills and to design and solve problems.
7	The course content is well supported by relevant reference and book materials.
8	Availability and accessibility of reference books/textual reading materials in the Department/ University Library.
9	Availability and accessibility of additional source material (library e-learning materials).
10	On-time coverage of the prescribed syllabus is possible within the allotted hours.
11	Continuous Assessment Tests and semester examinations are conducted regularly well in time with proper coverage of all units in the syllabus.
12	Freedom to propose, modify, suggest and incorporate new topics in the syllabus.
13	Freedom to adopt new techniques/strategies of teaching.

a. k. shrivastava

